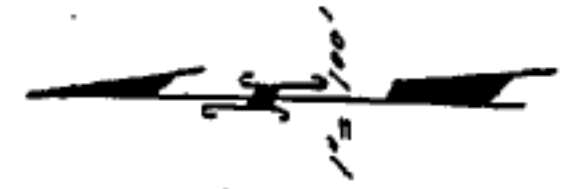
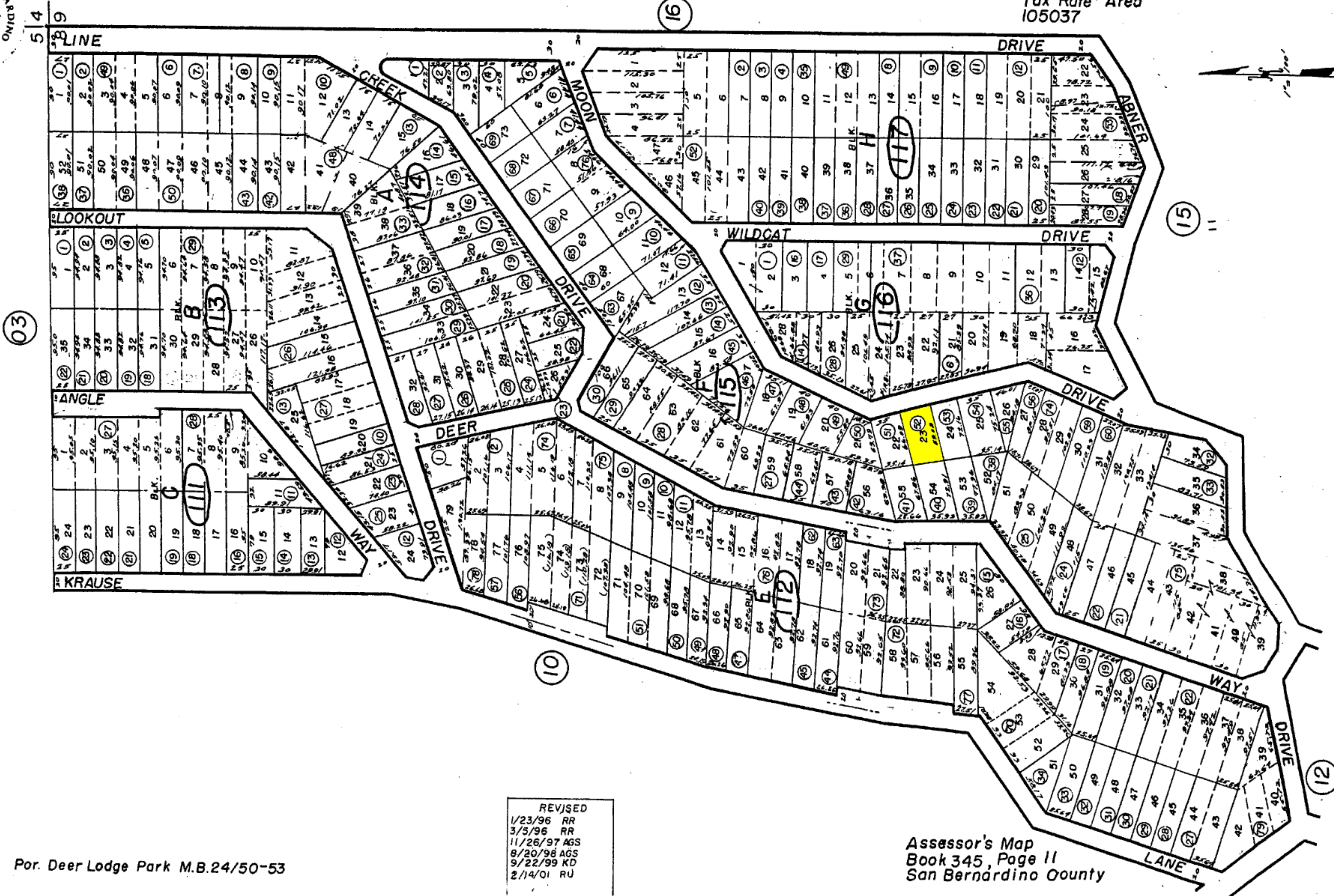




Por. NE.1/4 Sec.8 T.2N. R.3W.S.B.B.&M.

Rim of the World Unified Tax Rate Area 105037

345-11



REVISED  
1/23/96 RR  
3/5/96 RR  
11/26/97 AGS  
8/20/98 AGS  
9/22/99 KD  
2/14/01 RU

Assessor's Map  
Book 345, Page 11  
San Bernardino County