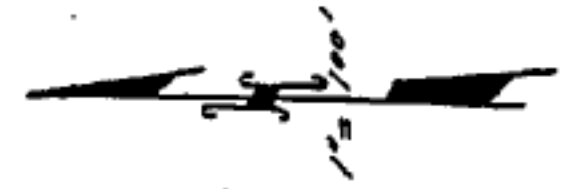
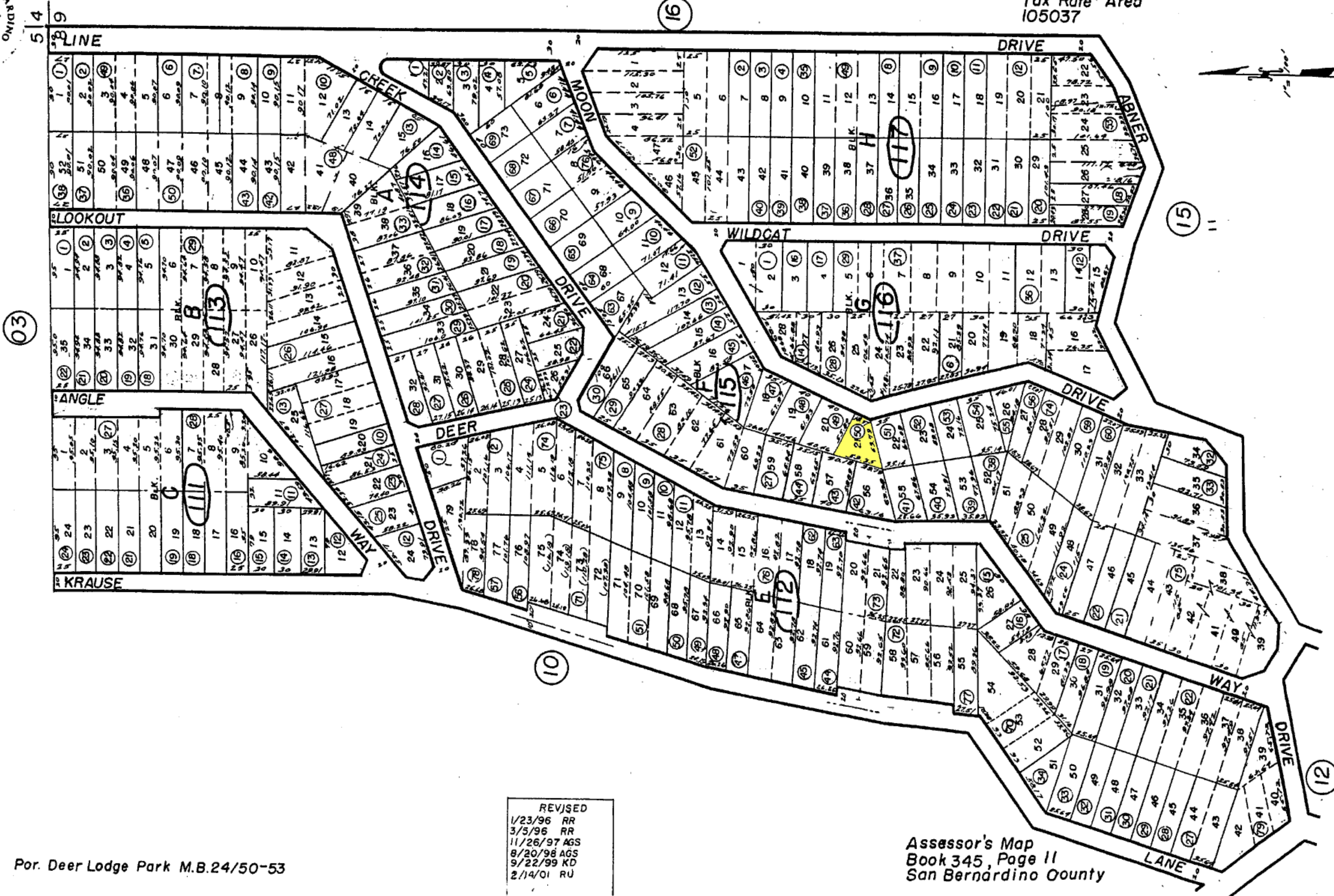




Por. NE.1/4 Sec.8 T.2N. R.3W.S.B.B.&M.

Rim of the World Unified Tax Rate Area 105037

345-11



03

16

15

10

12

REVISED
1/23/96 RR
3/5/96 RR
11/26/97 AGS
8/20/98 AGS
9/22/99 KD
2/14/01 RU

Assessor's Map
Book 345, Page 11
San Bernardino County