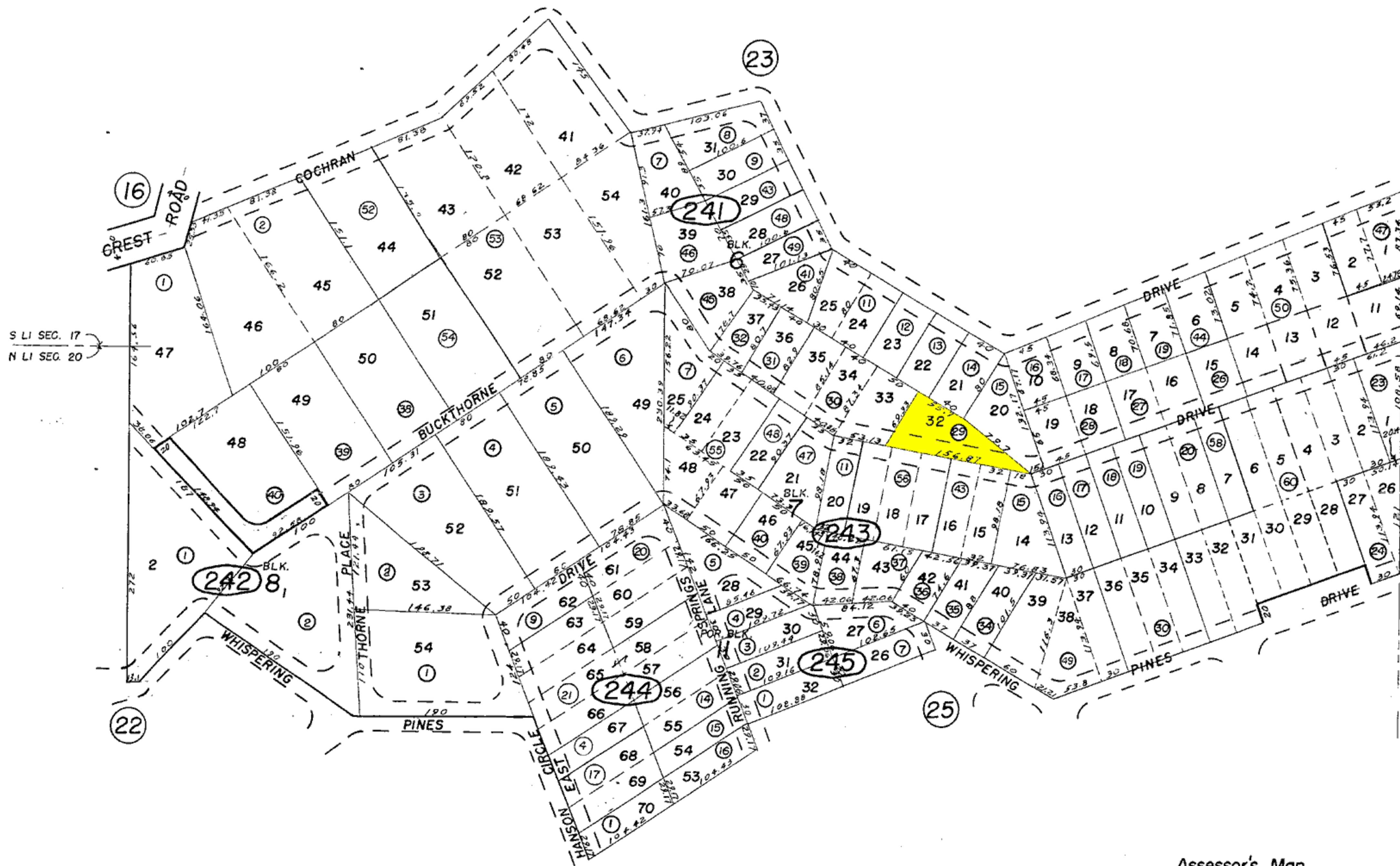




Por. SW 1/4 Sec. 17, Por. NW 1/4 Sec. 20, T.2N. R.4W., S.B.B.&M.
 Por. Cedarpines Park No. 4, M.B. 23/63

Rim of the World Unified
 Tax Rate Area
 105025

342-24



| REVISED | |
|----------|-----|
| 9/13/90 | GP |
| 11/30/92 | CC |
| 2/2/94 | RM |
| 2/22/95 | CC |
| 8/14/97 | AGS |
| 3/24/98 | AGS |
| 1/26/99 | KD |