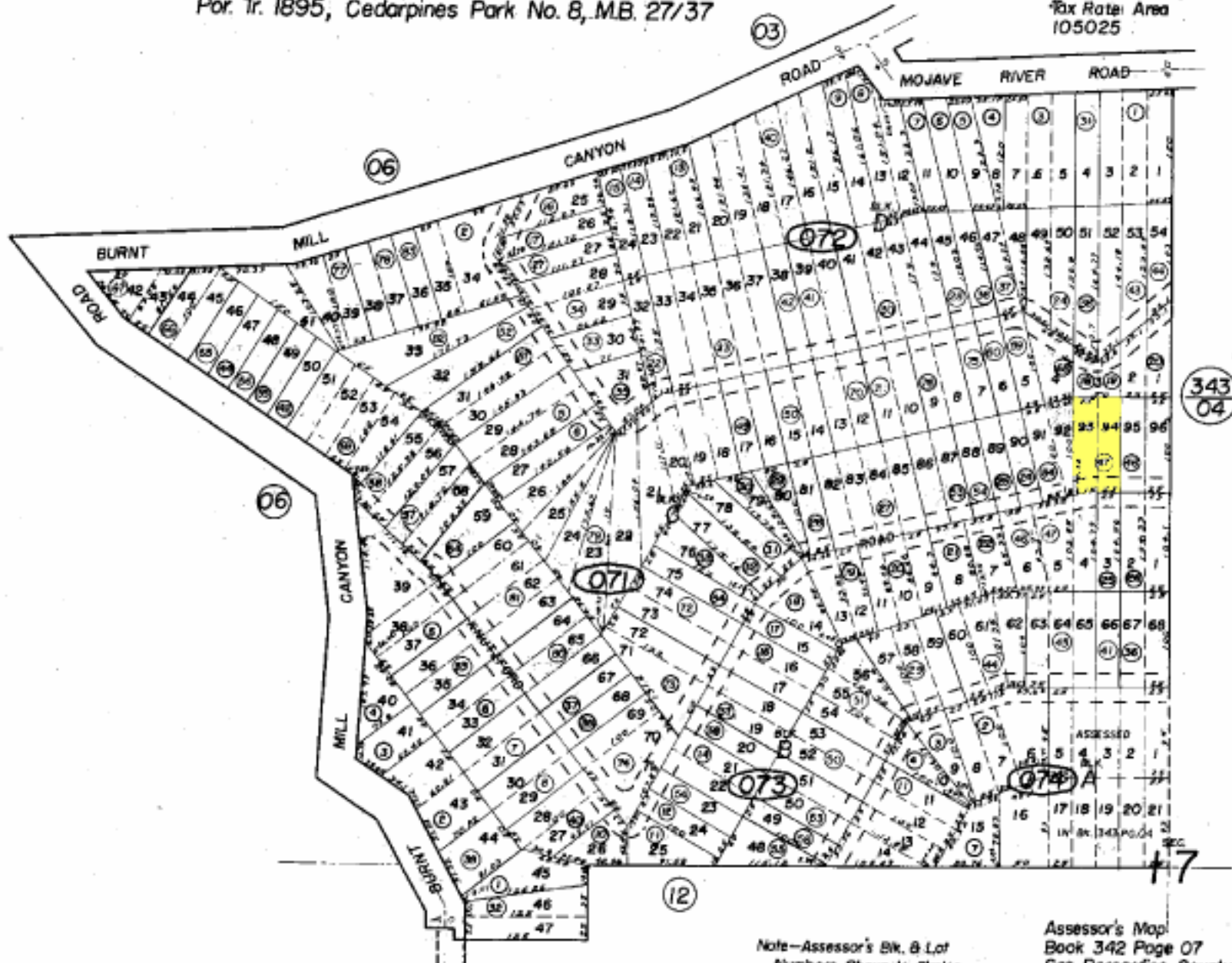




Por. W1/2 Sec. 17, T.2N. R.4W., S.B.B.&M.
 Por. Tr. 1895, Cedarpines Park No. 8, M.B. 27/37

Rim of the World Unified
 Tax Rate Area
 105025

342-07



February 1954

Note—Assessor's Blk. & Lot
 Numbers Shown in Circles

Assessor's Map
 Book 342 Page 07
 San Bernardino County

REVISED
 7/26/93 RR
 12/14/01 L.W.
 5/01/03 RLU
 12/9/03 GW