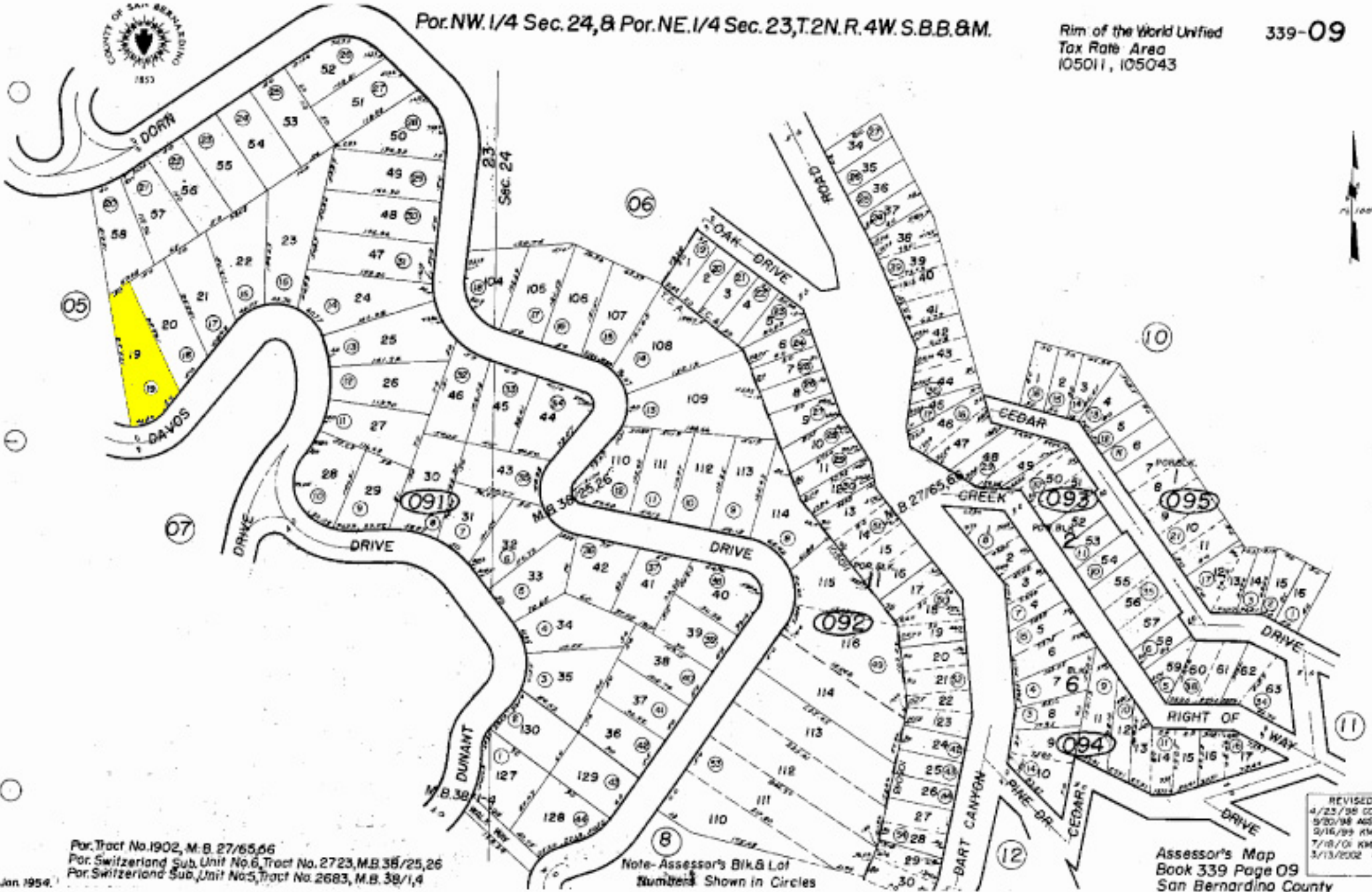




Por. NW. 1/4 Sec. 24, & Por. NE. 1/4 Sec. 23, T.2N. R. 4W. S.B.B. & M.

Rim of the World Unified  
Tax Rate Area  
105011, 105043

339-09



Por. Tract No. 1902, M. B. 27/65, 66  
Por. Switzerland Sub. Unit No. 6, Tract No. 2723, M.B. 38/25, 26  
Por. Switzerland Sub. Unit No. 5, Tract No. 2683, M.B. 38/1, 4  
Jan. 1954.

Note - Assessor's Blk. & Lot  
Numbers Shown in Circles

REVISOR  
4/23/98 CC  
5/20/98 AGS  
9/16/99 KMF  
7/18/01 KMF  
3/13/2002 J

Assessor's Map  
Book 339 Page 09  
San Bernardino County