



Por. SE 1/4 Sec. 14, T.2N. R.3W., S.B.B.&M.

Por. Tr. 2172, Lake-Brook Park Unit No. 2, M.B. 31/43-47

Rim of the World Unified Tax Rate Area 105031

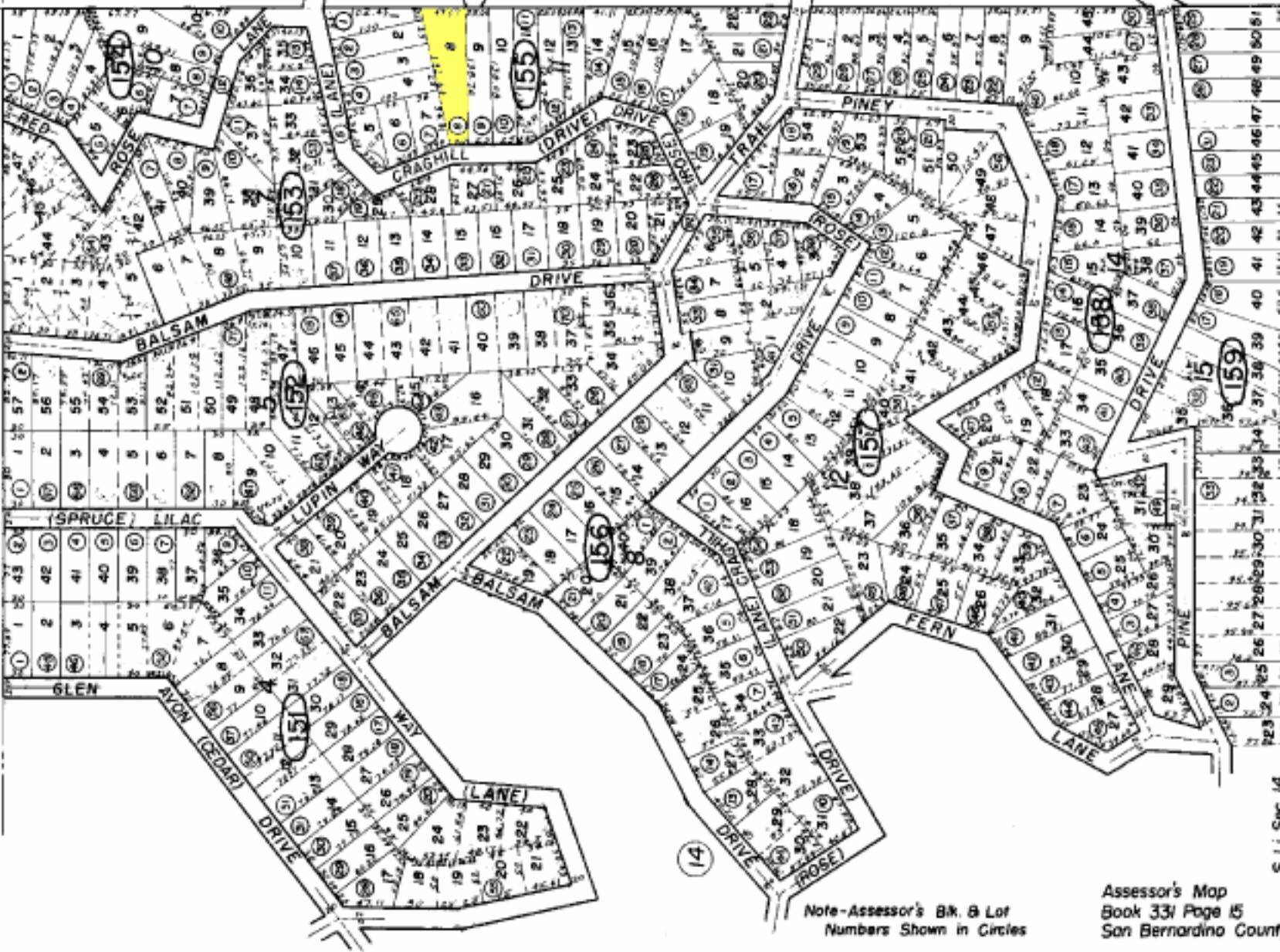
330/21

330/20

330/01

29

S L1 Sec. 14
N L1 Sec. 23



Note-Assessor's Blk. & Lot Numbers Shown in Circles

Assessor's Map
Book 331 Page 15
San Bernardino County

REVISED
6/29/98 A22
3/15/96 H1
9-15-90 KMF
10-3-01 RU

May 1993